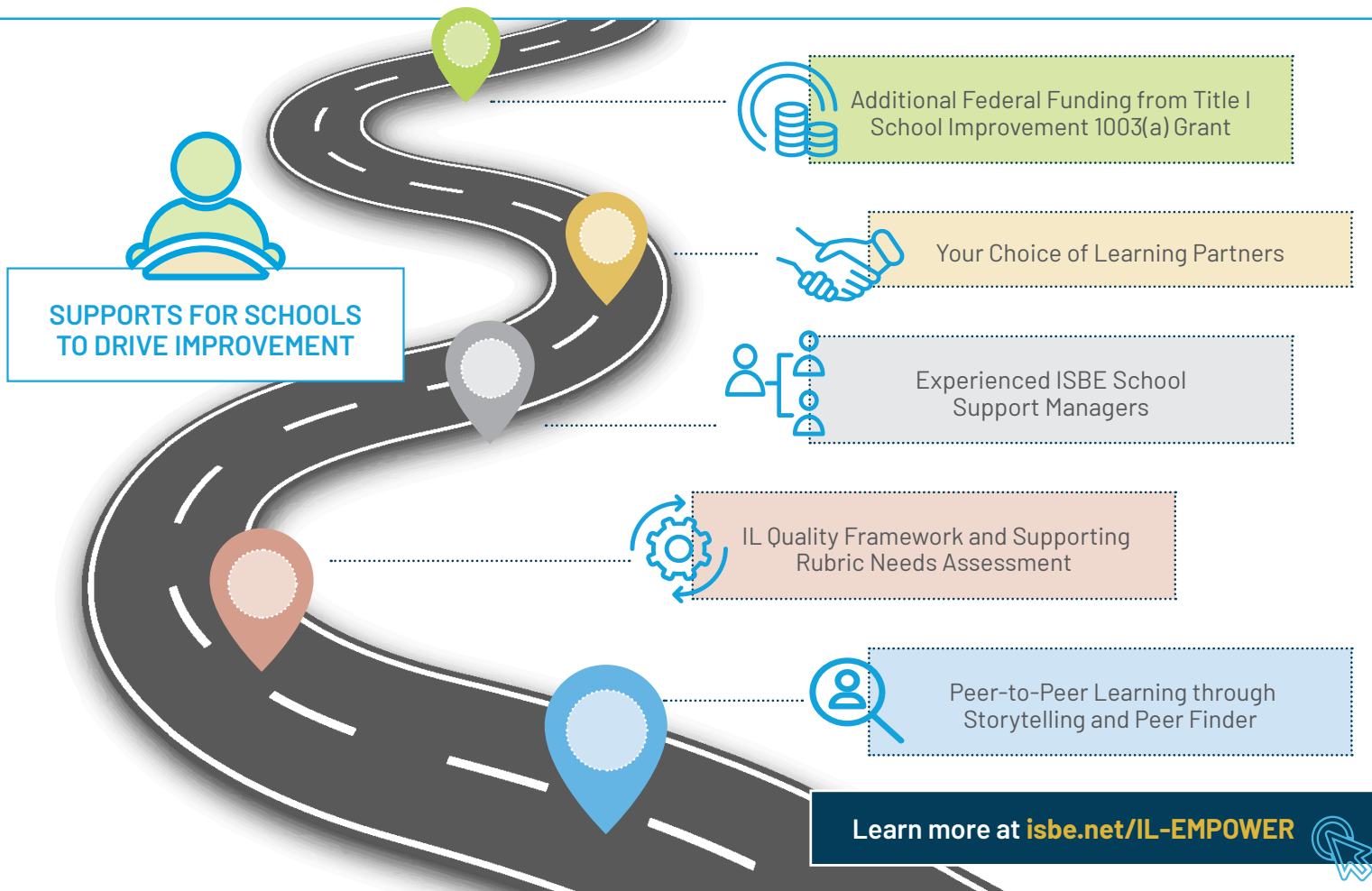


SCHOOL IMPROVEMENT PROCESS = NEEDS ASSESSMENT > WORKPLAN FOR IMPROVEMENT > IMPLEMENT & MONITOR

What is IL-EMPOWER?

IL-EMPOWER is school improvement. Schools, districts, partners, and the state work collaboratively to promote shifts in practice based on your improvement needs. Every school has abundant teaching and leading talent. IL-EMPOWER builds your capacity in the areas of Governance & Management, Curriculum & Instruction, and Climate & Culture.



SUPPORT & ACCOUNTABILITY

DESIGNATIONS / REPORT CARD / IL-EMPOWER



Illinois
State Board of
Education

Visit

isbe.net/support

Levels of IL-EMPOWER Supports



TARGETED

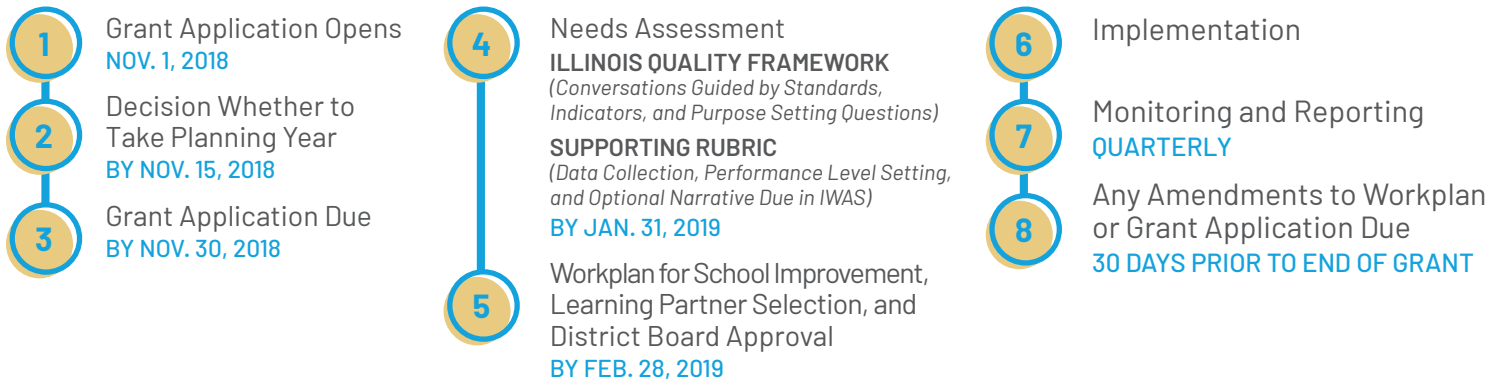
- Provided to Schools with Underperforming Designation
- Minimum of \$15,000 Available; Additional Federal Funding Based on Enrollment and Distance from Adequate Evidence-Based Funding
- Learning Partner Available
- School Support Manager Available
- May Exit After One Year; If Do Not Exit After Three Years, Provided Comprehensive Supports



COMPREHENSIVE

- Provided to Schools with Lowest-Performing Designation
- Minimum of \$100,000 Available; Additional Federal Funding Based on Enrollment and Distance from Adequate Evidence-Based Funding
- Learning Partner Required
- School Support Manager Assigned
- May Exit Only After Three Years; If Do Not Exit After Three Years, Enter State-Defined Intervention

TOOLS AND TIMELINE



SUPPORT & ACCOUNTABILITY

DESIGNATIONS / REPORT CARD / IL-EMPOWER



Illinois State Board of Education

Visit

isbe.net/support

